

# The Country Seat Courier

Volume 14, Issue 1

Catalog #31

January 2010

Start the new year off right with baskets for every season. Our January Specials will keep you busy on those cold winter nights!



**PLEASE NOTE:**

Some prices have been increasing on products without notice. We can not always absorb these increases. Please watch the newsletters & on-line catalog for product price changes.

## January Specials

Sale ends noon EST, Sat, Jan 30th  
*These are the same top quality products we always sell, we never bring in a lesser grade for sales!*

*Quantities may be limited on some items.  
 No additional discounts  
 Limited to stock on hand - No back orders*

**KIT SALE:**

**Jadvick Little Tote Basket Kit**

~~SALE \$4.76 each~~

3" x 7" x 4" H  
 Rectangular tote with side handles wrapped



**THIS MONTH'S SPECIALS HAVE EXPIRED - SEE WEBSITE FOR CURRENT SALE ITEMS**

**#9 Peach Blush - #3 Round Reed**  
 One color per piece, multiple colors per coil - peach, rose, oak & periwinkle.  
 1/4 pound coil. (regularly \$6.95 each)

**WIRE SALE:**

~~SALE \$1.78 each~~  
 (regularly \$2.22 each)

**#28 Jelly Jar w/Wooden Handle**  
 4" wide x 5" high



**PATTERN SALE:**

~~SALE \$2.40 each~~  
 (regularly \$3.00 each)

**Apple Picker Pattern**

**THIS MONTH'S SPECIALS HAVE EXPIRED - SEE WEBSITE FOR CURRENT SALE ITEMS**

wide victorian O. 2 pages

**Basil Drying Basket Pattern**

by Klann - 12" x 12" x 3" H (10" with handle)  
 natural & dyed flat & round reed w/braided cane border & handle wrapped w/cane over a round reed braid on a 12" x 10" D handle. 1 page



**Flag Heart Pattern**

**THIS MONTH'S SPECIALS HAVE EXPIRED - SEE WEBSITE FOR CURRENT SALE ITEMS**

create a heart shape. 2 pages

**Tyler's Easter Pattern**

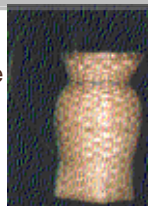
by Richards  
 12" x 12" x 10" H (including handle), flat, flat oval & round reed with 1-1/2" ash or maple accent strip



**THIS MONTH'S SPECIALS HAVE EXPIRED - SEE WEBSITE FOR CURRENT SALE ITEMS**

**Missouri Walnut Gathering Bsk Pattern**

by Morton - 5-1/2" Sq base (8" top dia.) x 15"H- flat reed w/half round reed handle, a reproduction of an old basket - a.k.a. Umbrella Basket. 4 pages



**TOOL SALE:**

~~SALE \$3.80 each~~  
 (regularly \$4.75 each)

**#705 Bent Nose Pliers**  
 Has a half round metal tip



**THIS MONTH'S SPECIALS HAVE EXPIRED - SEE WEBSITE FOR CURRENT SALE ITEMS**

By making a 90 degree turn, works great for getting into or out of tight spots. gently pulling beading needles that are stuck, grabbing needles from the inside of a gourd with a small opening, etc...

**2010 Special Hours & Vacation Dates**

- ◆ **CLOSED Saturday, February 20th - Saturday, February 27<sup>th</sup>**
- ◆ **CLOSED Wednesday, May 12<sup>th</sup> - Saturday, May 15<sup>th</sup>**
- ◆ **OPEN 9 AM - 4 PM June 5<sup>th</sup> - 5<sup>th</sup> Annual Hawk Mountain Arts Tour**
- ◆ **CLOSED Wednesday, June 23<sup>rd</sup> - Saturday, June 26<sup>th</sup>**
- ◆ **CLOSED Saturday, July 3<sup>rd</sup> - Monday, July 5<sup>th</sup>**
- ◆ **CLOSED Saturday, August 21<sup>st</sup> - Saturday, August 28<sup>th</sup>**
- ◆ **CLOSED Thursday, November 25<sup>th</sup> - Saturday, December 25<sup>th</sup>**
- ◆ **CLOSED Friday, December 31<sup>st</sup> - Saturday January 1<sup>st</sup>**

**E-MAIL LISTS**

We have had to redo our e-mail lists. If you would like to receive the Monthly Specials e-mail, please send us an e-mail with your full name, to: [newsletter@countryseat.com](mailto:newsletter@countryseat.com).  
 If you would like to receive notification of upcoming classes, please send us an e-mail, with your full name, to: [classes@countryseat.com](mailto:classes@countryseat.com).

## WINTER CLASSES

See the Classes Page on-line for complete info & registration.

**Saturday, January 9th ~ V-Twill**  
**9AM – 1PM** - taught by Angie  
**\$35**

Fun & easy twill woven on a 5" square slotted oak base. Rim is lashed with 4-ply waxed linen



**Saturday, February 6th ~**  
**Random Weave**  
**9AM – 1PM**

**\$35** - taught by Angie  
Learn to loosen up with Random Weave. Weave a structured or free-form basket.



Random weave begins with a frame & then the weavers are looped & woven back & forth in a random manner (think of a bird's nest). The resulting basket can have a very open weave or be very tightly woven with almost no spaces remaining. We will be using materials such as: red osier dogwood, willow, natural & dyed round & flat reed. Your choice of working on a gourd or making a basket. Please specify basket or gourd when registering for class.



## VLADIMIR YARISH

### Russian Birch Bark

Vladimir Yarish will be here for the week of March 17 – 24<sup>th</sup>, 2010. Mark your calendars & plan your days off – don't miss a chance to learn Russian diagonally plaited & double woven birch bark. More information will be posted online.



## Tip of the Month

What makes a bad piece of reed? This answer will vary from person to person.

Some times reed is just plain bad. It might be cut unevenly, hairy, thick & thin in the same piece, just awful. Do you throw it away? NO. Save it for the last row of weaving (the rim row) that goes under the rim. This row is only used for support, it never shows, so it does not matter what this piece of reed looks like.

While one person is unhappy because their last coil of reed was all too thin/thick for their needs, the next person has been searching for that kind of reed.

Many times a coil of reed will contain some pieces that are stiff/thick & some that are flexible/thin. This is great, you have a variety of pieces to choose from for your projects.

Save those thin/flexible pieces for things like: lashing, starting & ending a basket, weaving small baskets, special projects like twill or cat's head baskets, plaited ornaments, etc.

Save the stiffer/thicker pieces for rims (There is no reason why you can't use flat reed for rims, it looks great. Works best on smaller baskets. Wrap the flat reed at least twice around the basket for the outside rim to give extra strength.). Weaving in the middle of the basket where the spokes/staves are farthest apart or weaving from the middle to the top of a basket that flares outward as it increases in height (like a wastebasket) is a great place to use stiffer reeds. Save the stiffer pieces for stakes/staves.

Never let your weaver distort or bend your spokes/staves (unless you want a certain look or are creating an art piece, these could be exceptions). If you cannot pack your rows tightly against each other, your weaver may be too stiff and/or your spokes/staves too thin. Take that out & find a thinner one.

You should feel each piece before you pull it out of the coil & put it in the water. If it feels very stiff & you need something flexible, put it aside. It will only become flexible to a point after soaking. It will not magically become a super flexible piece of reed if you leave it in the water for an hour. That's way too long. 5- 10 minutes is more than plenty for any flat reed. The longer you leave reed in the water the worse the

quality becomes.

Do you need lots of thick/stiff or thin/flexible pieces of reed for a particular project? Let us know when you place the order. We can't guarantee 100% that all the pieces will be what you want, but we will look at each coil as we pull your order. Sometimes it is obvious. Example: if you are weaving backpacks with 3/8" flat oval weavers. This is a very important time to check the thickness of your weaver. Too stiff & your backpack will become distorted. Tell us you are ordering weaving or rim flat oval & we will pick thinner or thicker reeds for you.

## SPRING CLASSES

See online for complete details or e-mail for registration forms.

**Venie Hinson – April 22 - 24**

Double your pleasure with Venie's classes. Your choice of one of two baskets taught each day plus the marbling workshop during the afternoon.



**Anne Bowers – May 20 - 22**

Some new ideas for working with antlers, Sq ribbed basket & a great big round reed dish.



## OPEN WEAVE DATES

January 22<sup>nd</sup>

February 12<sup>th</sup>      March 5<sup>th</sup>

Open Weave runs between 11 & 3. Bring your questions or that pattern you just can't figure out. We'll do our best to get you on the right track

## ITEMS SOLD OUT

- p. 24      Rub-On #6440 Small Fruit
- p. 26      Basketry Weekend Crafter
- Natural Dyes & Home Dying
- p. 29      Christmas Holly Bell - Shaban

## The Country Seat, Inc.

1013 Old Philly Pike, Kempton, PA 19529  
Phone: 610-756-6124 Fax: 610-756-0088  
e-mail: [weaving@countryseat.com](mailto:weaving@countryseat.com)  
website: [www.countryseat.com](http://www.countryseat.com)  
catalog: <http://catalog.countryseat.com/>

The Country Seat Courier is published monthly. We welcome your comments and suggestions.

Duplication of this newsletter is permitted and encouraged.

You will automatically receive a newsletter with an order when you purchase supplies from us.